

**EMMETT J. CONRAD
A TRUE COALITION BUILDER**

Dr. Emmett J. Conrad, the grandchild of slaves, was born and raised in Baton Rouge, La. He completed premedical studies at Stanford University and graduated from Southern University in Baton Rouge, La., and Meharry Medical College in Nashville, Tenn. Conrad served in the U.S. Army during World War II and the U.S. Air Force during the Korean War.



In 1955, he moved to Dallas and began his medical career at St. Paul Hospital. He was the first African-American surgeon admitted to the staff at that medical center. In 1981, he was named the first black president of the Greater Dallas Community of Churches.

A true coalition builder, Conrad ventured into the civic and political arenas, promoting education in Dallas and throughout Texas. He also promoted free-lunch programs for low-income students and the integration of administrative staff.

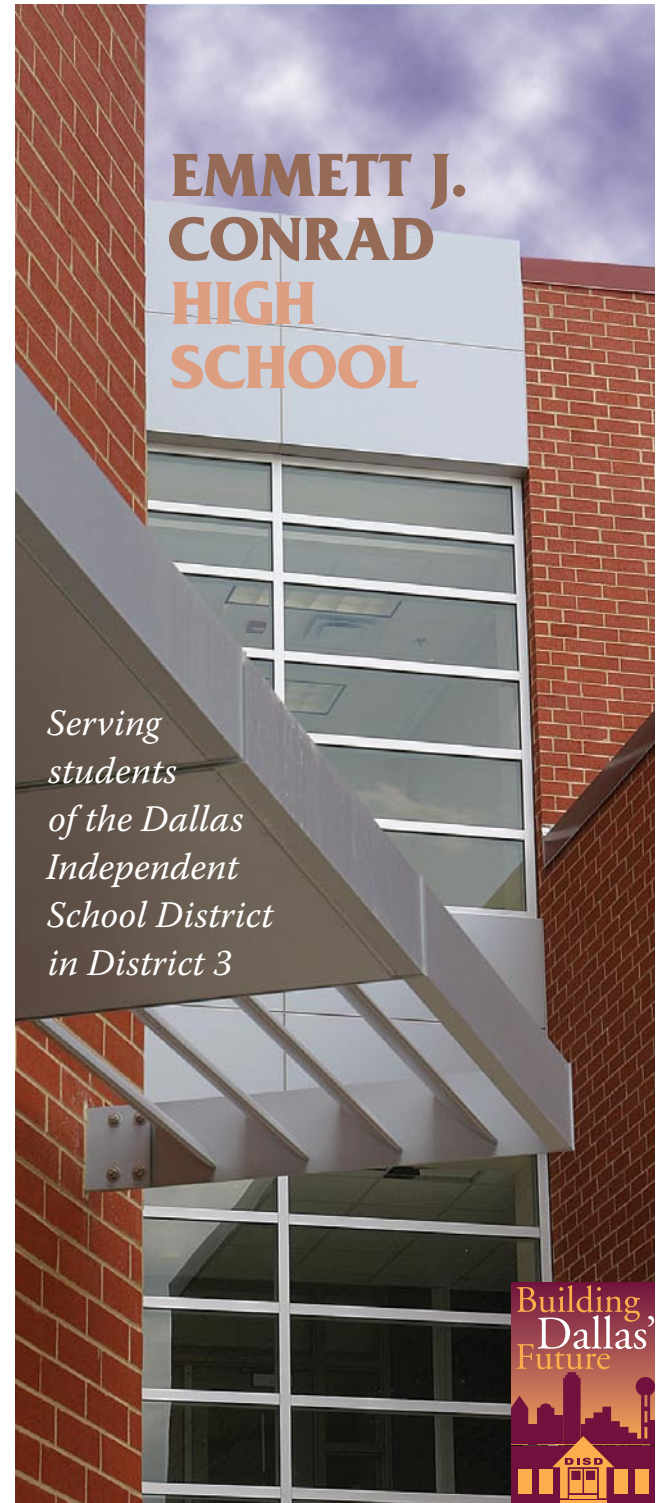
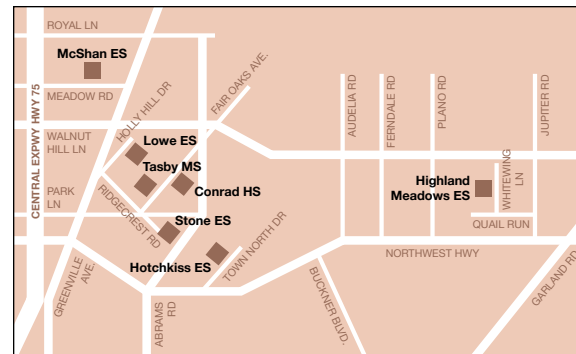
In 1967, Conrad became the first African American elected citywide to the Dallas Independent School District Board of Trustees, a position he held until 1977. In 1984, then-Governor Mark White appointed Conrad as one of the first members of a newly formed State Board of Education. He also served on the Texas Senate Committee for Financing Public Education.

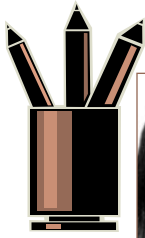
Conrad died April 24, 1993, at age 69. He is survived by his wife, Eleanor, and daughter, Cecilia. Without taking away from his great achievements in medicine, Conrad will be most remembered for his concern for and work in the community and for the education of children.

FEEDER PATTERN

Grades PreK-5	Grade 6	Grades 7-8	Grades 9-12
Highland Meadows ES	Highland Meadows ES	Robert T. Hill MS	Emmett J. Conrad HS
L.L. Hotchkiss ES	Sam Tasby MS	Sam Tasby MS	Emmett J. Conrad HS
Jack Lowe Sr. ES	Sam Tasby MS	Sam Tasby MS	Emmett J. Conrad HS
Lee A. McShan Jr. ES	Sam Tasby MS	Sam Tasby MS	Emmett J. Conrad HS
Dan D. Rogers ES	Sam Tasby MS	Sam Tasby MS	Emmett J. Conrad HS
Jill Stone ES	Sam Tasby MS	Sam Tasby MS	Emmett J. Conrad HS

Emmett J. Conrad High School is receiving students from Hillcrest and Bryan Adams high schools.





EMMETT J CONRAD HIGH SCHOOL



INTRODUCTION

The residents of the Vickery Meadow area of North-east Dallas have long desired their own neighborhood schools as anchors for a thriving community. To that end, the Vickery Meadow Improvement District, a coalition of approximately 50 area organizations, has worked with the Dallas ISD to plan and develop three new campuses for their area, one of which is Emmett J. Conrad High School.

FeaturesFeaturesFeaturesFeaturesFeatures

SPECIAL FEATURES

Emmett J. Conrad High School is designed more like a community college than a high school. Constructed on a sloping site with **four levels of classrooms** and three-stories, the school is situated amid spacious surroundings. The building lends a unique architectural presence to the community it serves.

The building has about 330,000 square feet and 46 core classrooms. In addition, there are **special classrooms for science, instructional technology, performing arts, and visual arts**; a state-of-the art **computer room for graphic design**; **media center**; **gymnasium**; **cafeteria and food service area**; and **administration and guidance offices**.

A special feature of the high school is a **full-service restaurant** in which students can train for careers in **food and hospitality services, marketing, and entrepreneurship**. Outback Steakhouse Inc. is assisting in the development of the restaurant and related educational programs.

A **Youth and Family Center** operated by Parkland Hospital also is located at the school. This clinic offers **mental and physical health services to the community** as well as a referral network for other social services. A **full-time nurse and psychologist** staff the center.

Students at the school have their own **play and practice fields**, and, because the school is adjacent to Dallas' Fair Oaks Park, have access to several additional sports fields.

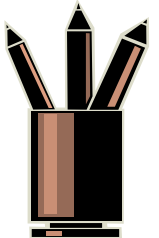
ACADEMIC FEATURES

In addition to the core curriculum, **all students** at Emmett J. Conrad High School **will be enrolled in one of three courses designed to prepare them for life after graduation**. Each course offers students opportunities to **explore potential careers, acquire successful study habits, develop goals for success, and experience working in groups in business situations**.

Students also will **volunteer or conduct service projects in the community** and be involved in extracurricular activities through **clubs, organizations, or athletic teams**.

Career education programs in **food and hospitality services, marketing, and entrepreneurship** are being offered at an on-site steakhouse restaurant facility in the high school. Students also can explore **careers in the banking industry** and in **banking-related services** through the school's Academy of Finance program. A simulated bank, sponsored by JP Morgan Chase Bank, will give students **job shadowing and internship opportunities**.

In addition to an environmental sciences curriculum, future plans include **community partnerships to support health and job fairs** and provide volunteer opportunities for all students.



Grade levels
Nine through 12

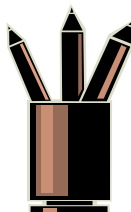
Enrollment
800 students

Size
330,000 square feet

Number of classrooms
46

Construction cost
\$40 million

Opened
August 2006



FACTS & FIGURES