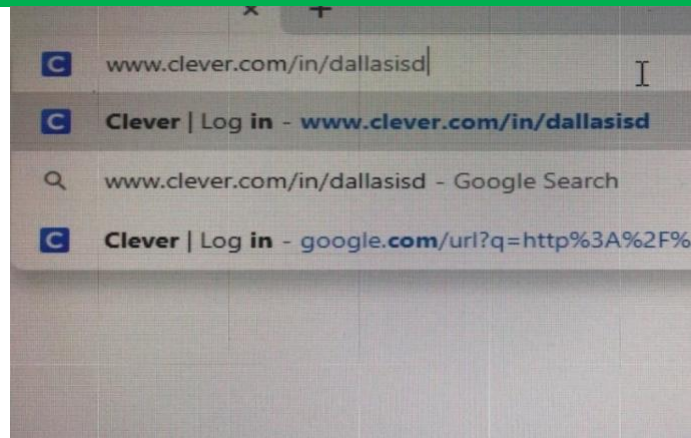


How to Get into Clever to Find Google Classroom and additional Resources

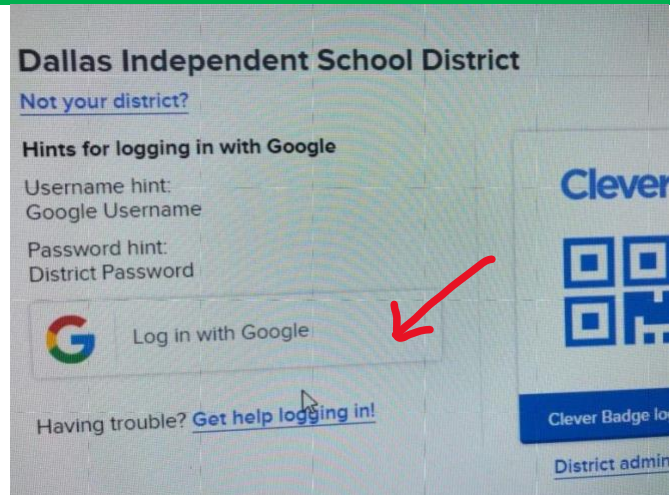
Step 1

Go to
www.clever.com/in/dallasisd



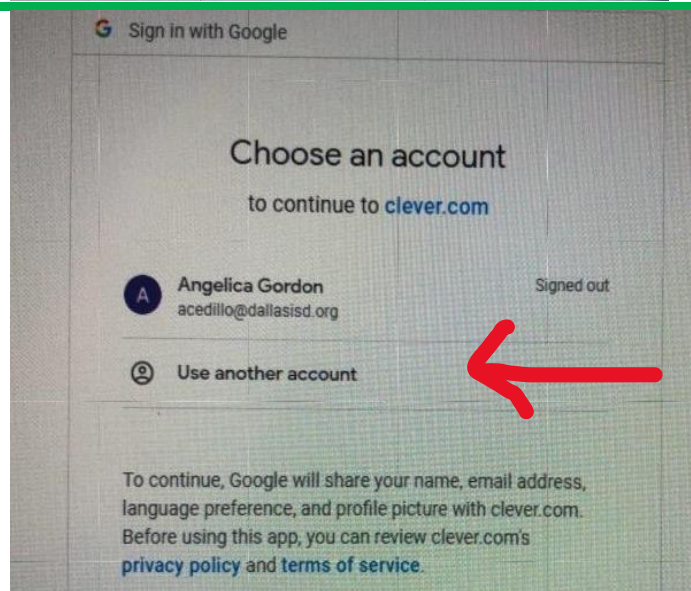
Step 2

Select
Log in with Google



Step 3

Select
use another account



Step 4

Use your child's school assigned email

Student ID@dallasisd.org

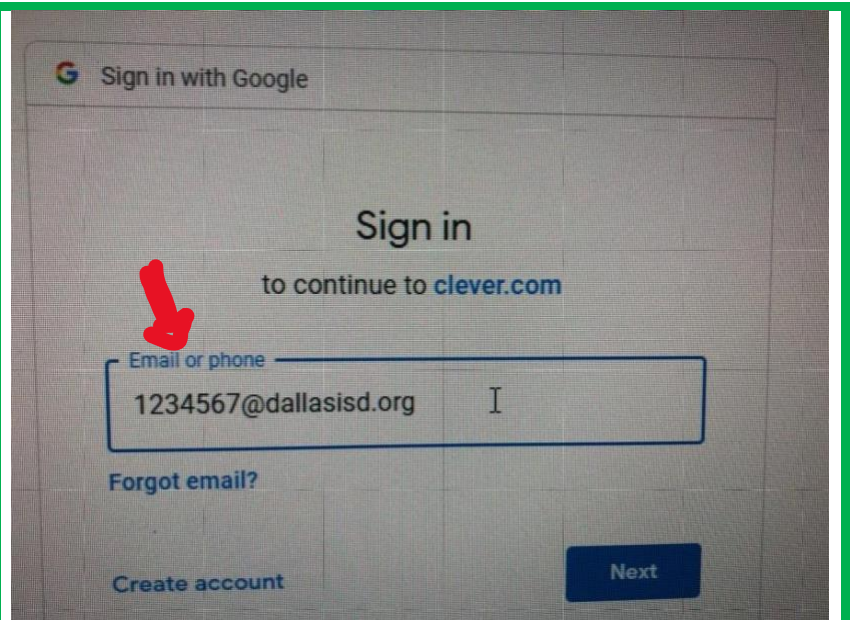
Example student ID=2222110

2222110@dallasisd.org

Your child's ID number

(lunch number)

Then press Next

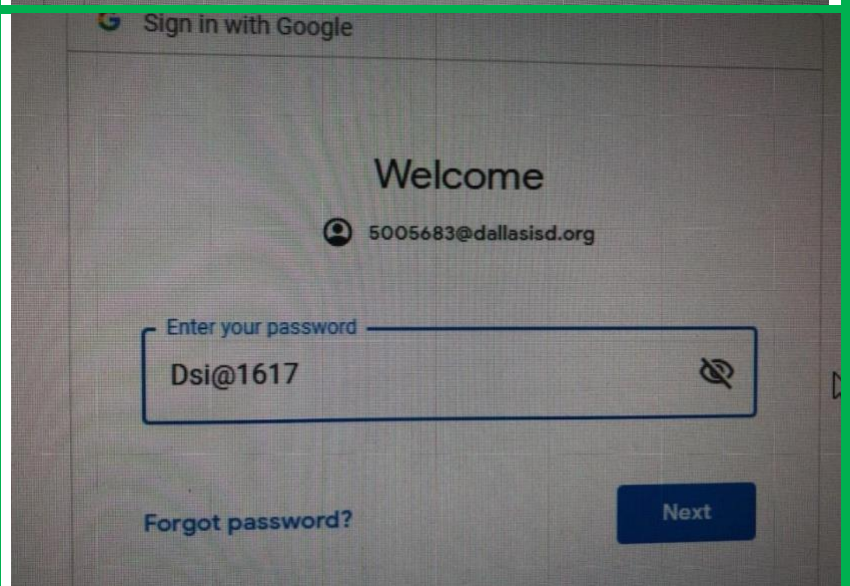


Step 5

Enter password

Dsi@1617

Same password for all students

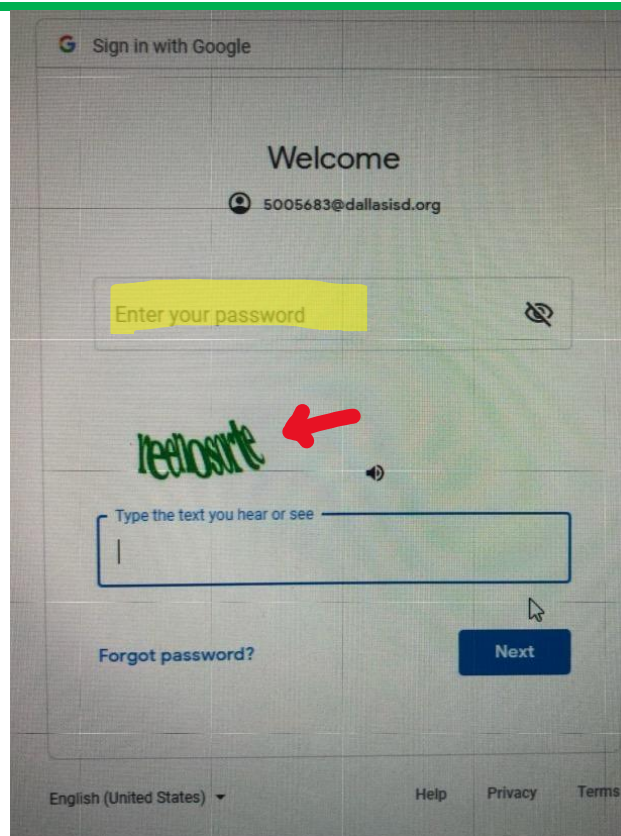


Step 6

It may ask you the password again

Dsi@1617

& enter the code given on your screen. Then press next.



Step 7

If your Screen Says **CLEVER** Congratulations, **YOU DID IT!**

If you were not able to login to Clever YET. Message me and I will gladly assist you.

