



H.S. Thompson Elementary School

COMMUNITY MEETING ♦ November 19, 2019 ♦ J.J. Rhoads Elementary

Jolee Healey, Deputy Chief

2020-21 Attendance Boundary Planning

COMMUNITY INPUT

H.S. Thompson Elementary School



Re-Opening January 2021

Meeting Purpose

- To share boundary planning considerations for:
 - J.J. Rhoads Elementary School
 - H.S. Thompson Elementary School

- Gather input from the community

Why are changes being considered?

- The opening of the new H.S. Thompson Elementary School
- Attendance zone changes are being considered to more effectively serve the local students and community

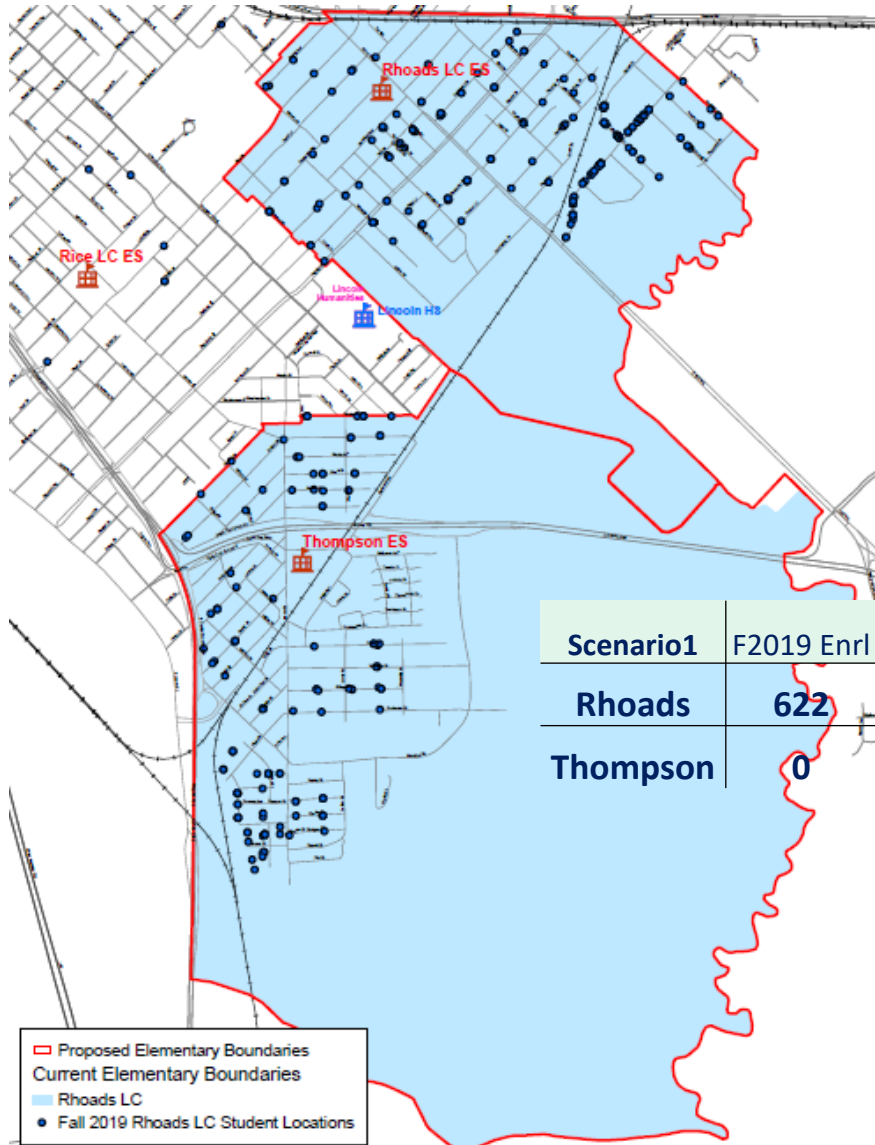
2020-21 Attendance Boundary Planning

- NOTHING has been decided or approved yet regarding boundary changes
- Boundary planning is for attendance zones effective starting in the 2020-21 school year

How are boundary changes determined?

- Area schools are examined to determine the most efficient way to distribute the student population within the capacities of each school and needs of the community
- Long-term projections provided by the latest demographic study are reviewed
- Student addresses are analyzed to determine which areas can be rezoned to another school
- Input is gathered from various stakeholders and the Board-appointed Attendance Boundary Advisory Committee helps develop recommendations

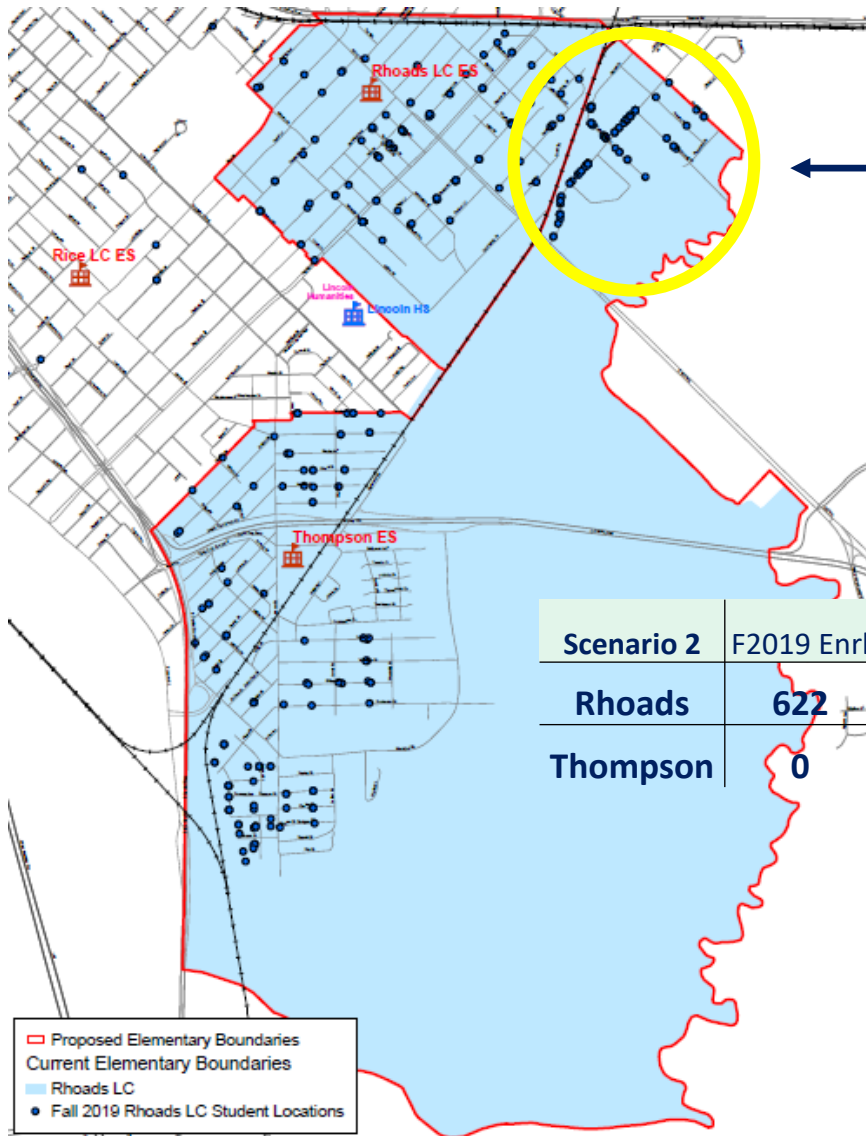
“Original Zone” Scenario 1



- Original zone for Thompson
- Dividing street boundaries are Harding and Brigham
- Low estimated enrollment

Scenario1	F2019 Enrl	Capacity	F2019 Util	F2020 Est. Enrl	F2020 Capacity	F2020 Est. Util
Rhoads	622	913	68%	490	913	54%
Thompson	0	0	N/A	250	450	56%

Scenario 2



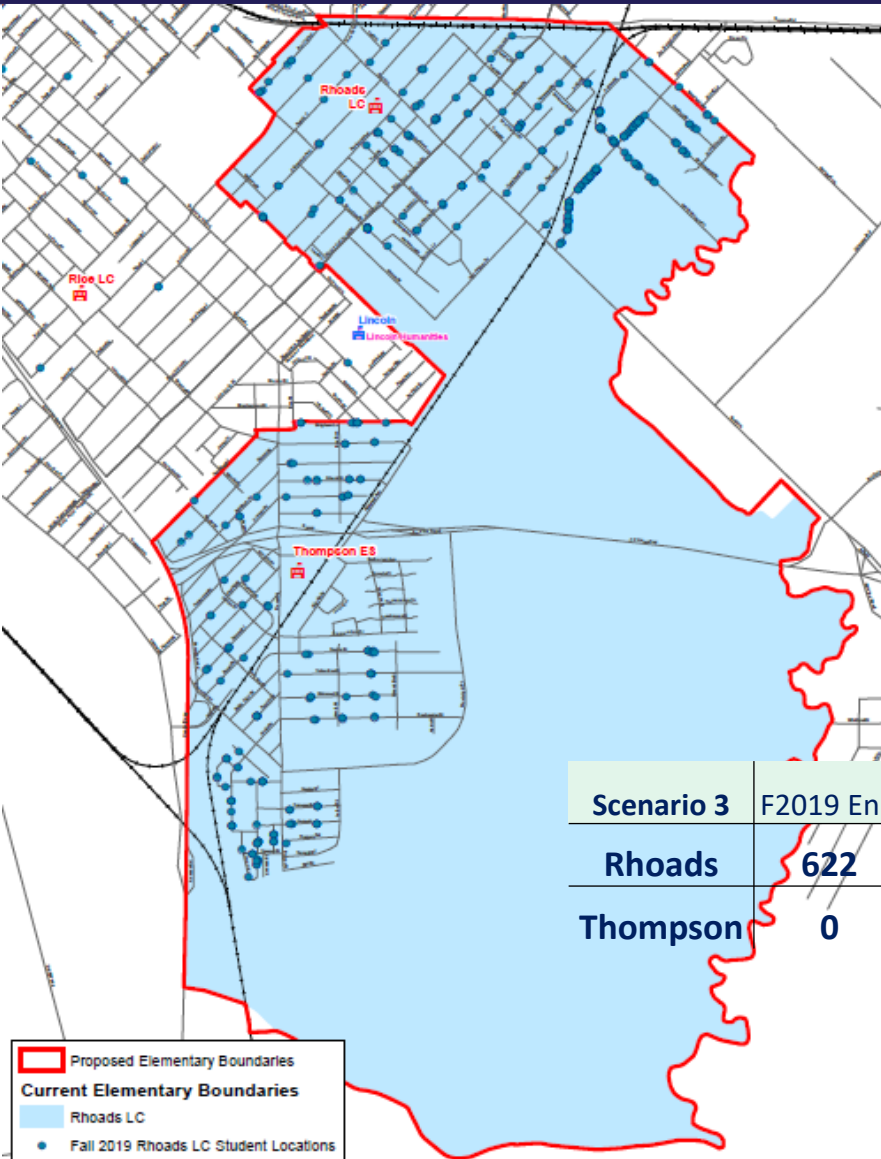
- Original zone + area north of 2nd Ave and east of railroad
- Enrollment is more balanced
- Rhoads is underutilized

Scenario 2	F2019 Enrl	Capacity	F2019 Util	F2020 Est. Enrl	F2020 Capacity	F2020 Est. Util
Rhoads	622	913	68%	356	913	39%
Thompson	0	0	N/A	384	450	85%

Scenario 3

- All of Rhoads is rezoned to the new H.S. Thompson
- Rhoads is repurposed to better serve the community
- Requires additional capacity at Thompson

Scenario 3	F2019 Enrl	Capacity	F2019 Util	F2020 Est. Enrl	F2020 Capacity	F2020 Est. Util
Rhoads	622	913	68%	TBD	TBD	TBD
Thompson	0	0	N/A	622	650	96%





Questions and Discussion